



Accessible Acrylic Shower Stall APTH4848BF2



Shower shown with available accessories
Comes standard in white

53 1/2" x 48 1/4" x 84"
1 piece for new construction

2" Barrier Free Threshold
(mud set required)

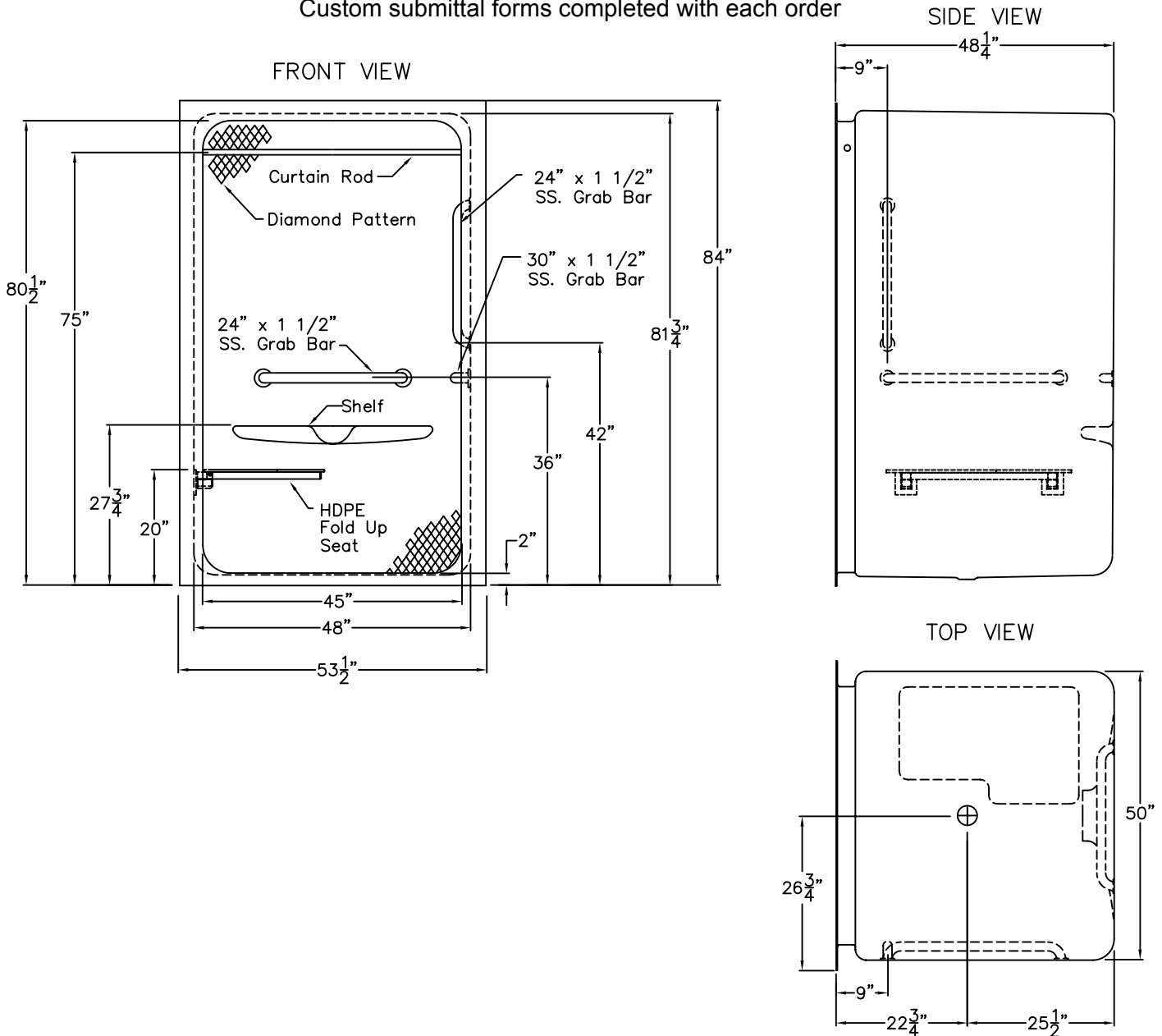
Accessories available:

- HDPE folding shower seat
- Stainless steel grab bars
- Stainless steel curtain rod
- Collapsible water retainer
- Weighted shower curtain
- Handheld shower glidebar kit with pressure balance valve.
- Caulkless drain

Durable, luxurious and easy to clean acrylic with diamond tile look.

Acrylic Accessible Shower

Submittal Information; All accessories shown are optional
Custom submittal forms completed with each order



ACCESSIBLE ACRYLIC SHOWER WITH MOLDED ACCESSORY SHELF. UNIT MAY CONFIGURE, WITH TWO HORIZONTAL STAINLESS STEEL GRAB BARS, ONE 24" ON THE BACK WALL AND ONE 30" ON THE VALVE WALL, ONE 24" STAINLESS STEEL VERTICAL GRAB BAR ON THE VALVE WALL, FRAMELESS HDPE FOLD UP SEAT, STAINLESS STEEL CURTAIN ROD. AND FACTORY INSTALLED EASY BASE SELF SUSTAINING BOTTOM. UNIT HAS 2.0" THRESHOLD.

DUE TO THE NATURE OF THE MATERIALS DIMENSIONS MAY VARY ± 1/2"

Job Name:			
Model No.: APTH4848BF2		Drawing#: APTH4848BF2 HBW HSW VSW FHDP CR EB	
Approved by:	Date Approved:	Date: 4-19-07	Revised: 3-13-09
Rep.:	Wholesaler:	Quote No.:	